

URBAN FIRE TRUCKS

MUNICIPAL FIRE FIGHTING & RESCUE VEHICLES



MFT Series.

Economical. Efficient. Effective.



MERAJ URBAN FIRE FIGHTING & RESCUE VEHICLES

REAR MOUNT PUMPERS

MERAJ is the industry leader of rear mount apparatus. Each truck is completely customized based on your department's specifications. Many departments utilize a MERAJ pump which provides exceptional capacity to flow multiple diameter hose lines from one pump simultaneously. [NFPA & EN Compliant]

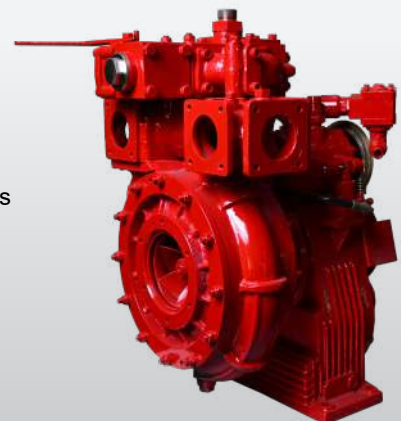
A rear mount offers your department more compartment area for equipment storage, keeping the tools you need close at hand during calls. Pump control panel locations can be either on the operator's, back, or curb side.



MERAJ FPN & H SERIES PUMP [EN 1028]

DRIVE OPTIONS

- ▶ PTO Direct Driven - No Gear Box
- ▶ PTO Gear Box with Multiple Drive Ratios
- ▶ MERAJ 1500 to 6000 LPM Single-Stage Fire Pumps
- ▶ High Pressure Pump 400 LPM
- ▶ Five Year Warranty
- ▶ Quiet & Efficient Operation
- ▶ Shaft Supported by Three Bearings
- ▶ Automatic Primer System
- ▶ High Grade Stainless Steel Shaft
- ▶ 3D Spiral Shape Impeller
- ▶ Self Adjusting Mechanical Seals



TRUCK CONFIGURATIONS

Choosing the right configuration for the vehicle is worry-free with Meraj. Our professional engineering staff are dedicated to making your specifications a reality.

MERAJ MFT Series pumper is a tried and tested model series with many of configurations being used by various departments and company's using it around the world.

MFT Series is being offered currently in the following truck models;

Pakistan Assembled Trucks

- ISUZU NPR71 | 130 HP | 9-ton GVW | 4x2 | Euro-II
- ISUZU NPS71 | 130 HP | 7-ton GVW | 4x4 | Euro-II
- ISUZU FVR90 | 210 HP | 18-ton GVW | 4x2 | Euro-II
- ISUZU FVR34 | 240 HP | 18-ton GVW | 4x2 | Euro-II
- ISUZU FTS34 | 240 HP | 13-ton GVW | 4x4 | Euro-II
- ISUZU FVZ34 | 280 HP | 29-ton GVW | 6x4 | Euro-II
- ISUZU FXZ36 | 360 HP | 36-ton GVW | 6x4 | Euro-II

Imported Trucks

- MAN TGM 18.250 | 250 HP | 18-ton GVW | 4x2 | Euro-V
- MAN TGM 18.250 | 250 HP | 18-ton GVW | 4x4 | Euro-V
- MAN TGM 18.330 | 330 HP | 18-ton GVW | 4x2 | Euro-V
- MAN TGM 18.330 | 330 HP | 18-ton GVW | 4x4 | Euro-V



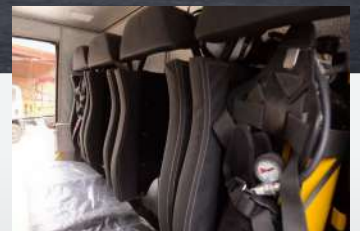
Full Access Control Panel with all controls ergonomically accessible [Optionally Pneumatic Actuated Controls]



Full depth, Full height storage side compartments



Slide out storage and equipment trays



SCBA seats for crew



High pressure and Low pressure hose reel

MERAJ MID-SHIP MOUNT PUMPERS

Mid-ship mount pumpers are generally used for departments and industries that have access to hydrants and wider spaces for use. Although rear mount pumpers have dominated the market due to apparatus having enough space to install auxiliary firefighting agents and having appropriate spacing for EZ-Stow racking and slides for firefighting equipment. Nonetheless Meraj is the leader in firefighting innovation, incorporating world class features into your apparatus no matter what the kind.

Meraj's HDized-AP, ALX-AP, and SL bodies are fully-customizable and are available in 1/8" or 3/16" aluminum, stainless steel or galvanized iron. State-of-the-art body electrical wiring reduces service time and money.



TRIED AND TRUE

MERAJ FP SERIES PUMP [NFPA]



DRIVE OPTIONS

- ▶ PTO Direct Driven - No Gear Box
- ▶ PTO Gear Box with Multiple Drive Ratios
- ▶ MERAJ 500 to 1500 GPM Single-Stage Fire Pumps
- ▶ NFPA Rated from 500 GPM to 1500 GPM
- ▶ Five Year Warranty
- ▶ Quiet & Efficient Operation
- ▶ Shaft Supported by Three Bearings
- ▶ Automatic/Electric Primer System
- ▶ High Grade Stainless Steel Shaft
- ▶ 3D Spiral Shape Impeller
- ▶ Self Adjusting Mechanical Seals



EQUIPMENT AND PUMP CONFIGURATIONS

Choosing the right pump and equipment for the vehicle is worry-free with Meraj. Our professional engineering staff are dedicated to making your specifications a reality.

MERAJ MFT Series pumper is a tried and tested model series with many of configurations being used by various departments and company's using it around the world.

MFT Series is being offered currently in the following according to the truck models;

9-ton below trucks are only offered in HDized-AP body concept

– 9-ton GVW Truck

4000 L water max. | 400 L foam max. | External crew cab | 250 kg DCP
| 90 kg CO2

– 7-ton GVW Truck

3000 L water max. | 300 L foam max. | External crew cab | 150 kg DCP
| 45 kg CO2

– 18-ton GVW Truck

HDized-AP, SL or ALX-AP body | 8000 L water max. | 800 L foam max. |
External crew cab | 500 kg DCP | 90 kg CO2

– 13-ton GVW Truck

HDized-AP or SL body | 5500 L water max. | 500 L foam max. | External
crew cab | 250 kg DCP | 90 kg CO2

– 29-ton GVW Truck

HDized-AP, SL or ALX-AP body | 12000 L water max. | 1200 L foam
max. | External crew cab | 500 kg DCP | 135 kg CO2

– 36-ton GVW Truck

HDized-AP, SL or ALX-AP body | 14000 L water max. | 1400 L foam
max. | External crew cab | 500 kg DCP | 135 kg CO2



*Note: choosing max fluid capacities will leave no space for equipment storages, crew cab or auxiliary extinguishing agents. Please consult our sales engineers for the right selection.



Choosing the PTO gearbox for the right job;

Meraj offers a variety of PTO options for fire apparatus, choosing the right PTO can make a huge difference when the call comes in.

Currently Meraj offers 4 types of PTOs;

1. Full torque, Flywheel clutch free engagement [Pump and Roll]
2. Full torque, Flywheel with clutch engagement [optional pump and roll]
3. Split shaft PTO
4. Side PTO - limited to only 3000 l/min normal pressure

*Note: with option 1 a remote control monitor is mandatory otherwise option 2 is alternatively offered.



 merajlimited

Meraj Limited

 merajinternational

 @merajlimited

MERAJ Türkiye

KOSBAŞ Serbest Bölgesi - Sepetlipınar SB Mah.

107 Cad. Modüler İşyeri No. 5 iç Kapı No.

Başiskele - Kocaeli 41090 - Türkiye

Tel: +9221-35050145/6

Fax: +9221-35060663

E-mail: sales@meraj.com.tr

www.meraj.com.tr

Special Application Trucks & Pumps | Since 1976

