

# Telescopic Lorry Cranes

Hydraulics Division - MERAJ



## General

The TC-5004 is a highly efficient and versatile telescopic lorry crane, designed to meet the needs of various industries. This crane is primarily operated using side levers, making it easy to maneuver and control during various lifting tasks. It is compatible with trucks that have a payload capacity of over 6-tons, which ensures that it can be used for a wide range of applications. With a net weight of approximately 2500 kg, the TC-5004 offers a solid balance of power and portability, making it an excellent choice for those in need of a reliable and effective lorry crane solution.

## Performance

- Max. lifting capacity: 5-ton / 2.5 m
- Max. lifting height: 11.2 m
- Max. working radius: 14.7 m
- Max. working height: 13.4 m

Max. Rated Load 5000 kgf / 2.5 m		
Load Capacity (Kgf / m)	3660 / 3.9	1 <sup>st</sup> Boom
	1990 / 6.3	2 <sup>nd</sup> Boom
	1400 / 8.8	3 <sup>rd</sup> Boom
	990 / 11.2	4 <sup>th</sup> Boom

## Structure & Construction

The telescopic crane boasts an innovative boom construction that incorporates several unique features to enhance its performance and versatility. Its hexagonal shape not only adds to the visual appeal, but also contributes to the stability and strength of the crane. The boom is divided into six sections, consisting of three cylinders and two wire, which allows for smooth and efficient operation.

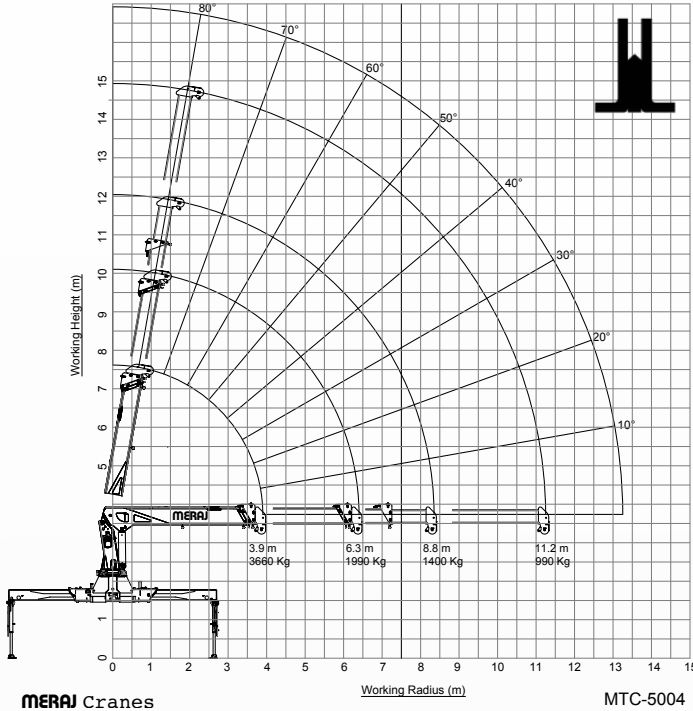
One of the key features of this telescopic crane is its wide range of angle adjustment, from 0 to 80 degrees, making it suitable for numerous applications and work environments. The combination of the hexagonal shape, sectional design, and adjustable angle ensures that this crane can effectively meet the demands of various tasks while providing exceptional stability and reliability.

## Fluids

- Rated Flow 61 L / min
- Oil Tank 160 L

# Telescopic Lorry Cranes

Hydraulics Division - MERAJ



## Hydraulic Winch

The hydraulic winch is an essential component of TC-5004, and it features a spur gear reduction and mechanical brake design. This combination ensures smooth and controlled operation while maintaining the necessary power for various tasks. The winch is equipped with a 10 mm-thick wire rope that spans 108 meters, providing ample length for a wide range of applications.

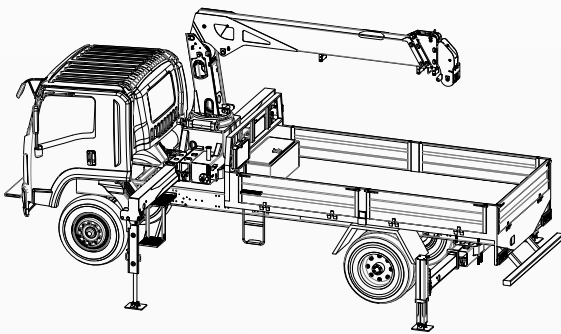
To ensure the safety of both the equipment and the operators, the hydraulic winch includes a hook safety latch as a safety device. This latch helps prevent accidental disengagement of the hook, reducing the risk of injury or damage to the load.

## Safety Devices

- Pressure Relief Valve
- Counterbalance Valve
- Pilot-operated Check Valve
- Boom angle indicator
- Hook safety latch
- Winch Brake
- Warning Alarm
- Emergency Stop Switch
- Overwinding Alarm
- Wire separation prevention

## Outriggers

Outrigger No. 2 (Main), 2 (Rear)  
Outrigger type Hydraulic (Vertical + Horizontal)



LOAD CHART										MTC-5004	
Radius (m)	1	2	3	4	5	6	7	8	9	10	11
BOOM											
1st	5000	5000 (2.5m)	4140	3660 (3.9m)							
2nd		3920	3200	2670	2400	1990 (6.3m)					
3rd			2770	2330	2040	1830	1680	1510	1400 (8.8m)		
4th			2630	2150	1830	1600	1420	1300	1230	1130	990 (11.2m)

## Contact

### MERAJ Türkiye

KOSBAŞ Serbest Bölgesi - Sepetlipınar SB Mah.  
107 Cad. Modüler İşyeri No. 5 iç Kapı No.  
Başiskele - Kocaeli 41090 - Türkiye

Tel: +90-262-341-4372  
Ph: +90-543-414-52-70  
E-mail: sales@meraj.com.tr

[www.meraj.com.tr](http://www.meraj.com.tr)

*Text and photos are non-binding. The photos may show extra optionals only available at extra charge.  
The right to change make changes in accordance with technical progress is retained.*

Special Application Trucks & Pumps | Since 1976